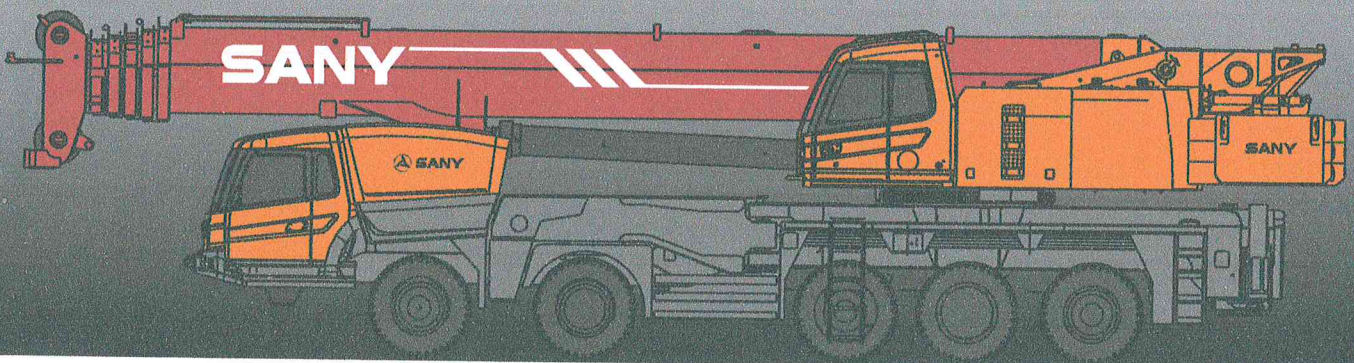


# STC1300C

STC1300C TRUCK CRANE  
130 TONS LIFTING CAPACITY

Quality Changes the World



# SANY

## Chassis

## Engine

- Type: V-type eight-cylinder, water cooled, supercharged and inter-cooling diesel engine
- Rated power: 350kW/1800r/min
- Environment-protection: Emission complies with EuroII standard
- Capacity of fuel tank: 450L

## Transmission system

- Gearbox: Manual / Automatic gearbox is adopted with 12 forward gears, 2 backward gears and large speed ratio range applied, which meets the requirements of low gradeability speed and high traveling speed.
- Transmission shaft: With optimized arrangement of the transmission shaft, the transmission is stable and reliable. For most optimized transmission, face-tooth coupling transmission shaft is used with large transmission torque.

## Brakes system

- Brakes system includes traveling brake, parking brake, emergency brake and auxiliary brake.
- Traveling brake: All wheels use the air servo brakes and dual-circuit brake system and are equipped with drum brakes.
- Parking brake: Force driven by accumulator is applied on the third to fifth axle.
- For emergency brake, accumulator is used not only for cutting-off brake but also for emergency brake.
- Auxiliary brake consists of engine brake and exhaust brake. Engine is equipped with dual brake with brake safety ensured while travelling.

## Suspension system

- All axles adopt the plate spring suspension systems with plate spring passed 100,000 fatigue tests and with optimization of performance parameters of the front and rear plate springs applied to ensure strength and also to provide comfort riding.

## Steering system

- Single-circuit hydraulic power steering system equipped with mechanical steering limit is used, with emergency steering device driven by emergency pump applied.

## Drive/Steer

- 10×6×6

## Outriggers

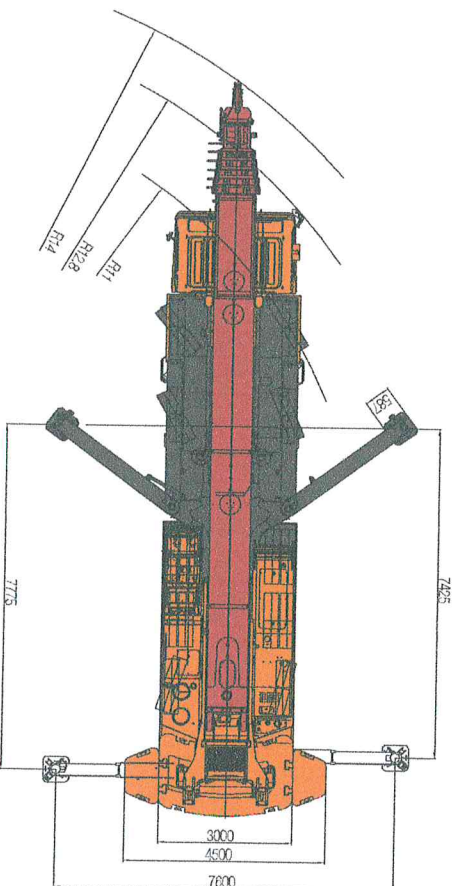
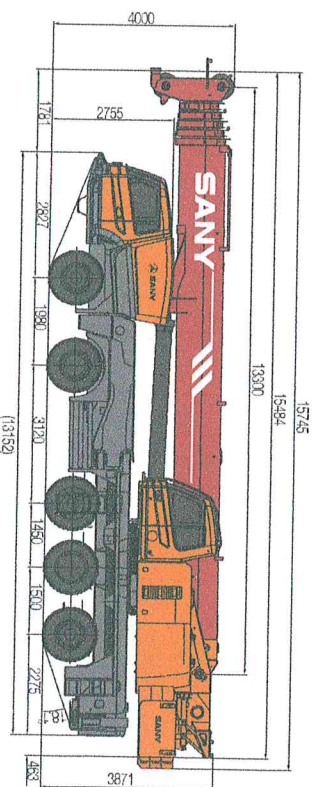
- Made of fine-grain high-strength steel sheet, outriggers can be controlled through control panel with automatic leveling function. Front swing outriggers and rear telescopic outriggers are arranged. Four-point supporting ensures easy operation and strong stability with Max. span up to 7.6m×7.6m.

## Tyres

- 14-12.00R24 20PR

## Electrical system

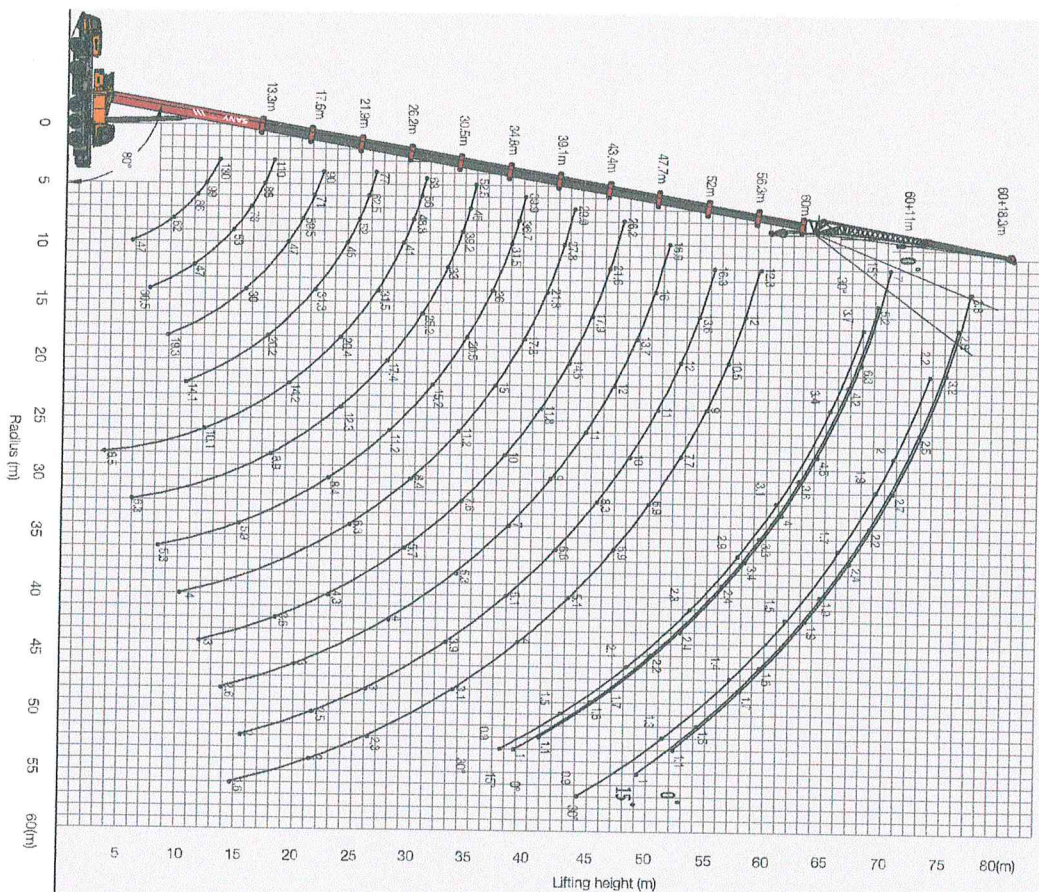
- With 2\*12V maintenance-free batteries, the crane power can be cut off manually via a mechanical master power switch. The use of CAN-bus control system can achieve information interaction between superstructure and undercarriage.



STC1300C TRUCK CRANE  
TECHNICAL PARAMETER

Type	Item	Parameter	
Capacity	Max. lifting capacity	130t	
	Overall length	15485 mm	
	Overall width	3000 mm	
Dimensions	Overall height	4000 mm	
	Axle distance	Axle-1-2	1980 mm
		Axle-2-3	3120 mm
		Axle-3-4	1450 mm
		Axle-4-5	1500 mm
Overall weight	54950 kg		
Weight	Axle load-1,2	9475/9475 kg	
	Axle load-3,4	13000/13000/10000 kg	
Traveling	Rated power	350 kW/180 rpm	
	Max. traveling speed	2300 N.m/1050 rpm	
	Turning radius	Min. turning radius	85 km/h
		Min. turning radius of boom head	11 m
	Wheel formula	14 m	
	Min. ground clearance	10x6 x6	
	Approach angle	310 mm	
	Departure angle	21°	
	Max. gradeability	18°	
	Fuel consumption per 100km	45%	
Temperature range	≤ 70 L		
Main Performance Data	Min. rated range	-2 °C - + 42 °C	
	Tail slewing radius of swingable	3 m	
	Boom section	4.74m	
	Boom shape	6	
	Max. lifting moment	Base boom	U-shaped
		Full-extend boom	5180 kN·m
	Boom length	Full-extend boom-Hjb	2156 kN·m
		Base boom	kN·m
	Outrigger span (Longitudinal/Transverse)	Full-extend boom	13.25 m
		Full-extend boom-Hjb	60 m
Jib offset		78.1 m	
Working speed	Max. single rope lifting speed of main winch (no load)	7.6 x 7.6 m	
	Max. single rope lifting speed of auxiliary winch (no load)	0°、15°、30°	
	Full extension/retraction time of boom	135 m/min	
	Full lifting/descending time of boom	125 m/min	
	Slewing speed	420 / 400 s	
Aircondition	Aircondition in up cab	80 / 90 s	
	Aircondition in low cab	2 / min	
		Cooling/Heating Cooling/Heating	

STC1300C Working Ranges



STC1300C TRUCK CRANE  
OPERATION CONDITION

- Prerequisites:  
 ① Boom operating conditions (fully extended boom length) min. length is 13.3m and max.length is 60m  
 ② The span of outriggers is 7.6m x 7.6m  
 ③ 360° rotation is applied  
 ④ Counterweight is OT

Range (m)	Main boom												Range (m)		
	13.3	17.6	17.6	17.6	21.9	21.8	21.9	26	26	26	30.5	30.5		34.8	
3.0	125.0	110.0	91.0	88.0	90.0	88.0	49.0	77.0	57.5	46.0	63.0	57.7	45.0	3	
3.5	125.0	103.0	86.0	66.0	88.0	85.0	47.0	73.0	55.0	42.0	57.7	52.5	43.0	3.5	
4.0	116.0	96.0	85.0	66.0	88.0	85.0	45.0	69.0	52.5	40.0	58.0	49.2	40.3	4	
4.5	108.0	93.0	82.0	63.0	88.0	83.0	45.0	69.0	52.5	40.0	58.0	49.2	40.3	4.5	
5.0	99.0	83.0	76.0	61.0	76.0	63.0	40.0	62.5	48.0	39.5	46.8	36.7	45.0	5.0	
6.0	83.2	64.1	65.6	55.5	63.4	57.5	40.0	45.3	43.0	37.0	45.3	36.7	45.0	6.0	
7.0	43.5	44.4	45.7	46.5	43.9	46.0	34.5	34.0	34.6	34.0	34.2	36.2	33.6	7.0	
8.0	31.9	33.1	34.2	35.0	32.6	34.5	27.0	29.5	26.4	27.3	26.7	27.7	29.9	8.0	
9.0	24.2	25.5	26.7	27.4	26.1	27.0	23.9	20.8	21.6	24.4	21.0	22.0	23.8	9.0	
10.0	18.9	20.0	21.1	21.5	19.6	21.4	18.4	13.7	14.4	16.9	13.9	14.8	16.0	10.0	
12.0		12.9	13.9	14.5	12.6	14.2	10.4	9.3	10.0	12.3	9.6	10.4	11.4	12.0	
14.0		6.6	9.5	10.1	8.3	9.6	11.0	9.3	10.0	12.3	9.6	10.4	11.4	14.0	
16.0					5.4	6.9	8.9	6.5	7.1	9.3	6.6	7.4	8.3	16.0	
18.0						4.8	6.7	4.3	5.0	7.1	4.5	5.3	6.2	18.0	
20.0								2.7	3.3	5.4	3.0	3.7	4.5	20.0	
22.0									1.5	2.1	4.1	2.5	3.3	22.0	
24.0														24.0	
26.0														26.0	
28.0														28.0	
30.0														30.0	
32.0														32.0	
34.0														34.0	
36.0														36.0	
Number of lines	12	12	10	8	10	8	5	9	6	5	6	5	5	5	Number of lines
II	0	0	0	0	46	0	0	46	0	0	46	46	46	46	II
III	0	46	0	0	46	46	0	46	92	0	92	46	46	46	III
IV	0	0	46	0	0	46	0	46	46	46	46	46	46	46	IV
V	0	0	0	46	0	0	46	0	0	46	0	46	46	46	V
VI	0	0	0	0	0	0	46	0	0	0	0	0	0	0	VI

- Prerequisites:  
 ① Boom operating conditions (fully extended boom length) min. length is 13.3m and max.length is 60m  
 ② The span of outriggers is 7.6m x 7.6m  
 ③ 360° rotation is applied  
 ④ Counterweight is OT

Range (m)	Main boom												Range (m)			
	34.8	34.8	39.1	39.1	39.1	43.4	43.4	43.4	47.7	47.7	47.7	52		52	56.3	60
3.0	34.8	34.8	39.1	39.1	39.1	43.4	43.4	43.4	47.7	47.7	47.7	52	52	56.3	60	
3.5	34.8	34.8	39.1	39.1	39.1	43.4	43.4	43.4	47.7	47.7	47.7	52	52	56.3	60	
4.0	34.8	34.8	39.1	39.1	39.1	43.4	43.4	43.4	47.7	47.7	47.7	52	52	56.3	60	
4.5	34.8	34.8	39.1	39.1	39.1	43.4	43.4	43.4	47.7	47.7	47.7	52	52	56.3	60	
5.0	34.8	34.8	39.1	39.1	39.1	43.4	43.4	43.4	47.7	47.7	47.7	52	52	56.3	60	
6.0	34.8	34.8	39.1	39.1	39.1	43.4	43.4	43.4	47.7	47.7	47.7	52	52	56.3	60	
7.0	34.8	34.8	39.1	39.1	39.1	43.4	43.4	43.4	47.7	47.7	47.7	52	52	56.3	60	
8.0	34.8	34.8	39.1	39.1	39.1	43.4	43.4	43.4	47.7	47.7	47.7	52	52	56.3	60	
9.0	34.8	34.8	39.1	39.1	39.1	43.4	43.4	43.4	47.7	47.7	47.7	52	52	56.3	60	
10.0	34.8	34.8	39.1	39.1	39.1	43.4	43.4	43.4	47.7	47.7	47.7	52	52	56.3	60	
12.0	34.8	34.8	39.1	39.1	39.1	43.4	43.4	43.4	47.7	47.7	47.7	52	52	56.3	60	
14.0	34.8	34.8	39.1	39.1	39.1	43.4	43.4	43.4	47.7	47.7	47.7	52	52	56.3	60	
16.0	34.8	34.8	39.1	39.1	39.1	43.4	43.4	43.4	47.7	47.7	47.7	52	52	56.3	60	
18.0	34.8	34.8	39.1	39.1	39.1	43.4	43.4	43.4	47.7	47.7	47.7	52	52	56.3	60	
20.0	34.8	34.8	39.1	39.1	39.1	43.4	43.4	43.4	47.7	47.7	47.7	52	52	56.3	60	
22.0	34.8	34.8	39.1	39.1	39.1	43.4	43.4	43.4	47.7	47.7	47.7	52	52	56.3	60	
24.0	34.8	34.8	39.1	39.1	39.1	43.4	43.4	43.4	47.7	47.7	47.7	52	52	56.3	60	
26.0	34.8	34.8	39.1	39.1	39.1	43.4	43.4	43.4	47.7	47.7	47.7	52	52	56.3	60	
28.0	34.8	34.8	39.1	39.1	39.1	43.4	43.4	43.4	47.7	47.7	47.7	52	52	56.3	60	
30.0	34.8	34.8	39.1	39.1	39.1	43.4	43.4	43.4	47.7	47.7	47.7	52	52	56.3	60	
32.0	34.8	34.8	39.1	39.1	39.1	43.4	43.4	43.4	47.7	47.7	47.7	52	52	56.3	60	
34.0	34.8	34.8	39.1	39.1	39.1	43.4	43.4	43.4	47.7	47.7	47.7	52	52	56.3	60	
36.0	34.8	34.8	39.1	39.1	39.1	43.4	43.4	43.4	47.7	47.7	47.7	52	52	56.3	60	
Number of lines	5	5	4	4	4	3	3	3	3	3	3	3	2	2	2	Number of lines
II	46	0	92	46	46	92	46	46	92	46	46	92	46	46	92	II
III	46	92	46	92	46	92	46	92	46	92	46	92	46	92	46	III
IV	46	46	46	46	46	46	46	46	46	46	46	46	46	46	46	IV
V	46	46	46	46	46	46	46	46	46	46	46	46	46	46	46	V
VI	46	46	46	46	46	46	46	46	46	46	46	46	46	46	46	VI

- Prerequisites:**  
 ① Boom operating conditions (fully extended boom length), min. length is 13.3m and max.length is 60m  
 ② The span of outriggers is 7.6m×7.6m  
 ③ 360° rotation is applied  
 ④ Counterweight is 12T

Range (m)	Main boom																Range (m)
	13.3	17.6	17.6	17.6	21.9	21.9	21.9	26	26	26	30.5	30.5	30.5	34.8	34.8	34.8	
3.0	130.0	110.0	91.0	82.0													3.0
3.5	126.0	103.0	86.0	66.0													3.5
4.0	116.0	98.0	85.0	65.0													4.0
4.5	108.0	93.0	82.0	63.0	98.0	85.0	47.0	73.0	54.5	42.0	63.0	57.7	43.0	52.5	47.1	45	
5.0	99.0	88.0	78.0	61.0	78.0	63.0	45.0	69.0	52.5	42.0	57.7	52.5	40.3	47.2	45.1	5.0	
6.0	86.0	80.0	70.5	55.5	71.0	57.5	40.0	62.5	48.0	39.5	56.0	48.2	40.3	47.2	45.1	6.0	
7.0	61.6	62.4	63.7	48.0	61.9	52.5	37.0	58.0	43.0	37.0	53.0	47.1	36.7	45.0	43.0	7.0	
8.0	46.1	47.3	48.4	43.0	46.8	47.0	34.0	48.1	40.0	34.0	48.4	45.1	33.6	42.4	39.7	8.0	
9.0	38.4	37.4	38.5	39.2	37.0	38.8	31.5	38.2	35.0	32.0	38.4	39.4	30.6	38.9	36.5	9.0	
10.0	29.5	30.5	31.5	32.1	30.1	31.8	29.0	31.2	32.0	29.2	31.5	32.4	28.2	31.9	33.5	10.0	
12.0	21.4	22.3	22.9	23.3	21.1	22.6	24.7	22.1	22.8	25.2	22.3	23.2	24.9	22.7	24.3	12.0	
14.0	15.6	16.5	17.1	17.1	15.3	16.8	18.9	16.4	17.0	19.3	16.6	17.4	19.1	17.0	18.4	14.0	
16.0					11.3	12.7	14.7	12.3	13.0	15.2	12.5	13.3	14.9	12.9	14.3	16.0	
18.0					8.4	9.8	11.7	9.4	10.0	12.1	9.6	10.4	11.9	9.9	11.3	18.0	
20.0								7.2	7.8	9.8	7.4	8.1	9.7	7.7	9.1	20.0	
22.0								5.4	6.0	8.1	4.3	5.0	6.5	4.8	5.9	22.0	
24.0											3.1	3.8	5.3	3.5	4.7	24.0	
26.0											2.1	2.9	4.3	2.5	3.8	26.0	
28.0														1.7	2.9	28.0	
30.0														1.0	2.2	30.0	
32.0																32.0	
34.0																34.0	
36.0																36.0	
38.0																38.0	
40.0																40.0	
42.0																42.0	
44.0																44.0	
46.0																46.0	
48.0																48.0	
50.0																50.0	
Number of lines	12	12	10	8	10	8	5	8	6	5	6	6	5	5	5	Number of lines	
II	0	0	0	0	46	0	0	46	0	0	46	46	0	92	46	II	
III	0	46	0	0	0	46	0	0	92	0	92	46	46	46	46	III	
IV	0	0	46	0	0	46	0	46	46	46	46	46	46	46	46	IV	
V	0	0	0	0	0	46	0	0	46	0	46	46	46	46	46	V	
VI	0	0	0	0	0	0	46	0	0	46	0	46	0	46	46	VI	

- Prerequisites:**  
 ① Boom operating conditions (fully extended boom length), min. length is 13.3m and max.length is 60m  
 ② The span of outriggers is 7.6m×7.6m  
 ③ 360° rotation is applied  
 ④ Counterweight is 12T

Range (m)	Main boom																Range (m)
	34.8	39.1	39.1	39.1	43.4	43.4	43.4	47.7	47.7	47.7	52	52	52	56.3	60		
3.0																3.0	
3.5																3.5	
4.0																4.0	
4.5																4.5	
5.0	44.0															5.0	
6.0	42.5	39.9	36.5	34.0												6.0	
7.0	40.3	38.3	35.1	31.5	29.9	26.7	24.6									7.0	
8.0	36.8	36.7	33.6	29.6	29.4	26.2	23.1	26.2	23.1	26.2	23.6	21.0				8.0	
9.0	33.6	34.1	31.5	27.0	28.9	25.6	22.1	28.2	22.5	20.4	18.9	16.8				9.0	
10.0	29.8	31.5	28.8	23.9	27.8	24.1	20.4	23.1	20.7	19.4	17.3	15.7				10.0	
12.0	24.8	23.7	24.2	21.8	23.7	22.5	18.9	21.6	19.4	17.8	16.3	14.7				12.0	
14.0	18.9	18.0	18.4	19.2	17.9	18.7	17.6	18.2	17.6	16.8	16.0	14.7				14.0	
16.0	14.8	13.8	14.2	15.1	13.8	14.5	15.5	14.1	15.0	15.1	14.5	13.6				16.0	
18.0	11.8	10.9	11.3	12.1	10.8	11.5	12.5	11.1	12.0	12.6	11.5	12.5				18.0	
20.0	9.5	8.6	9.0	9.8	8.6	9.3	10.2	8.9	9.7	10.3	9.3	10.2				20.0	
22.0	7.7	6.9	7.3	8.0	6.9	7.5	8.4	7.1	7.9	8.5	7.5	8.4				22.0	
24.0	6.3	5.5	5.9	6.6	5.5	6.1	7.0	5.7	6.5	7.1	6.1	7.0				24.0	
26.0	5.2	4.3	4.7	5.4	4.3	4.9	5.8	4.8	5.3	5.9	5.0	5.8				26.0	
28.0	4.2	3.4	3.7	4.5	3.3	4.0	4.8	3.6	4.4	5.0	4.0	4.8				28.0	
30.0	3.4	2.5	2.9	3.6	2.5	3.2	4.0	2.8	3.5	4.1	3.2	4.0				30.0	
32.0	2.7	1.8	2.2	2.9	1.8	2.5	3.3	2.1	2.8	3.4	2.5	3.3				32.0	
34.0		1.2	1.6	2.3	1.2	1.8	2.7	1.5	2.2	2.8	1.9	2.7				34.0	
36.0			1.0	1.8		1.3	2.1	1.0	1.7	2.2	1.3	2.1				36.0	
38.0							1.6		1.2							38.0	
40.0																40.0	
42.0																42.0	
44.0																44.0	
46.0																46.0	
48.0																48.0	
50.0																50.0	
Number of lines	5	4	4	4	3	3	3	3	3	2	2	2	2	2	2	Number of lines	
II	0	92	46	46	92	46	46	92	46	46	92	46	46	92	100	II	
III	92	46	92	46	92	46	92	46	92	46	92	46	92	46	100	III	
IV	46	46	46	46	46	46	46	46	46	46	46	46	46	46	100	IV	
V	46	46	46	46	46	46	46	46	46	46	46	46	46	46	100	V	
VI	46	46	46	46	46	46	46	46	46	46	46	46	46	46	100	VI	

STC1300C TRUCK CRANE  
LOAD CHART

- Prerequisites:**  
 ① Boom operating conditions fully extended boom length j, min. length is 13.3m and max length is 60m  
 ② The span of outriggers is 7.6m x 7.6m  
 ③ 360° rotation is applied  
 ④ Counterweight is 121 sliding counterweight

Range (m)	Main boom																Range (m)
	13.3	17.6	17.6	17.6	21.9	21.9	21.9	26	26	26	30.5	30.5	30.5	34.8	34.8		
3.0	130.0	17.6	17.6	17.6	21.9	21.9	21.9	26	26	26	30.5	30.5	30.5	34.8	34.8	3.0	
3.5	125.0	103.0	95.0	66.0	90.0	66.0	49.0	77.0	57.5	46.0	63.0	57.7	45.0	62.5	47.1	3.5	
4.0	116.0	98.0	85.0	63.0	88.0	65.0	47.0	73.0	54.5	44.0	60.0	54.2	42.0	60.0	45.1	4.0	
4.5	108.0	93.0	82.0	63.0	80.0	63.0	45.0	69.0	52.5	42.0	57.7	52.5	43.0	52.5	47.1	4.5	
5.0	99.0	88.0	76.0	61.0	78.0	63.0	43.0	65.0	50.0	40.0	55.0	50.0	40.0	50.0	45.1	5.0	
6.0	88.0	80.0	70.5	55.5	71.0	57.5	40.0	62.5	48.0	38.5	53.0	48.2	40.3	47.2	45.1	6.0	
7.0	83.8	64.6	65.8	48.0	64.1	52.5	37.0	58.0	43.0	37.0	53.0	47.1	38.7	45.0	43.0	7.0	
8.0	47.9	48.0	50.2	43.0	48.5	47.0	34.0	49.8	40.0	34.0	48.8	45.1	33.6	42.4	39.7	8.0	
9.0	37.8	38.9	38.9	40.5	38.4	40.2	31.5	39.6	35.0	32.0	39.9	40.9	30.6	39.2	36.5	9.0	
10.0	30.7	22.4	22.7	33.4	31.3	33.0	29.0	32.5	32.0	29.2	32.7	33.6	28.2	33.1	33.5	10.0	
12.0																12.0	
14.0																14.0	
16.0																16.0	
18.0																18.0	
20.0																20.0	
22.0																22.0	
24.0																24.0	
26.0																26.0	
28.0																28.0	
30.0																30.0	
32.0																32.0	
34.0																34.0	
36.0																36.0	
38.0																38.0	
40.0																40.0	
42.0																42.0	
44.0																44.0	
46.0																46.0	
48.0																48.0	
50.0																50.0	
Number of luffs	12	12	10	8	10	8	5	8	6	5	6	6	5	5	5	Number of luffs	
II	0	0	0	0	48	0	0	46	0	0	46	46	0	92	46	II	
III	0	46	0	0	46	0	0	92	0	92	46	46	46	46	46	III	
IV	0	0	0	46	0	0	46	46	46	46	46	46	46	46	46	IV	
V	0	0	0	0	0	0	0	0	0	0	0	0	0	0	0	V	
VI	0	0	0	0	0	0	0	0	0	0	0	0	0	0	0	VI	

STC1300C TRUCK CRANE  
LOAD CHART

- Prerequisites:**  
 ① Boom operating conditions fully extended boom length j, min. length is 13.3m and max length is 60m  
 ② The span of outriggers is 7.6m x 7.6m  
 ③ 360° rotation is applied  
 ④ Counterweight is 127 sliding counterweight

Range (m)	Main boom																Range (m)
	34.8	38.1	39.1	39.1	43.4	43.4	43.4	47.7	47.7	47.7	52	52	52	56.3	60		
3.0																3.0	
3.5																3.5	
4.0																4.0	
4.5																4.5	
5.0	44.0															5.0	
6.0	42.5	88.9	86.5	34.0												6.0	
7.0	40.3	38.3	35.1	31.5	28.9	26.7	24.6									7.0	
8.0	36.8	36.7	33.6	29.6	28.4	26.2	23.1	26.2	23.6	21.0						8.0	
9.0	33.6	34.1	31.5	27.0	26.6	25.5	22.1	26.2	22.5	20.4						9.0	
10.0	29.8	31.5	28.8	23.9	27.8	24.1	20.4	23.1	21.0	19.4	18.9	16.8				10.0	
12.0	25.7	24.7	25.2	21.8	24.7	22.5	18.9	21.6	19.4	17.8	17.3	15.7	16.3	12.3		12.0	
14.0	19.7	18.7	19.2	18.7	18.7	18.7	16.2	19.0	17.6	16.5	16.0	14.7	14.1	12.3		14.0	
16.0	15.5	14.5	14.9	15.8	14.5	15.2	13.1	14.8	13.6	12.5	12.1	11.0	10.9			16.0	
18.0	12.4	11.4	11.8	12.7	11.4	12.1	10.7	11.7	10.2	9.4	9.8	8.5	8.5			18.0	
20.0	10.0	9.1	9.5	10.3	9.1	9.8	8.0	9.4	8.4	7.6	7.6	6.9	6.9			20.0	
22.0	8.2	7.3	7.7	8.5	7.3	8.0	6.5	7.4	6.1	5.7	5.5	4.3	4.3			22.0	
24.0	6.7	5.9	6.3	7.0	5.9	6.5	5.2	6.2	4.8	4.7	4.3	3.1	3.1			24.0	
26.0	5.5	4.7	5.1	5.8	4.7	5.3	4.0	4.7	3.7	3.7	3.3	2.8	2.8			26.0	
28.0	4.5	3.7	4.1	4.8	3.7	4.3	3.2	3.9	3.1	3.1	2.7	2.3	2.3			28.0	
30.0	3.7	2.9	3.2	3.9	2.9	3.5	2.5	3.2	2.4	2.4	2.0	1.6	1.6			30.0	
32.0	2.9	2.1	2.5	3.2	2.1	2.7	1.8	2.4	1.8	1.8	1.4	1.1	1.1			32.0	
34.0																34.0	
36.0																36.0	
38.0																38.0	
40.0																40.0	
42.0																42.0	
44.0																44.0	
46.0																46.0	
48.0																48.0	
50.0																50.0	
Number of luffs	5	4	4	4	3	3	3	3	3	2	2	2	2	2	2	Number of luffs	
II	0	92	46	46	92	46	46	92	46	48	92	46	46	92	100	II	
III	92	46	92	46	92	46	46	92	46	46	92	46	46	92	100	III	
IV	46	46	46	46	46	46	46	46	46	46	92	92	92	92	100	IV	
V	46	46	46	46	46	46	46	46	46	46	92	92	92	92	100	V	
VI	46	46	46	46	46	46	46	46	46	46	92	92	92	92	100	VI	

STC1300C TRUCK CRANE  
LOAD CHART

- Prerequisites:**  
 ① Boom operating conditions (fully extended boom length), min. length is 13.3m and max.length is 60m  
 ② The span of outriggers is 7.6m x 7.6m  
 ③ 360° rotation is applied  
 ④ Counterweight is 20T counterweight

Range (m)	Main boom																Range (m)
	13.3	17.6	17.6	17.6	21.9	21.9	21.9	26	26	26	30.5	30.5	30.5	34.8	34.8		
3.0	130.0	110.0	91.0	66.0												3.0	
3.5	126.0	103.0	85.0	65.0												3.5	
4.0	116.0	99.0	80.0	63.0												4.0	
4.5	108.0	93.0	82.0	63.0	98.0	66.0	49.0	77.0	57.5	46.0						4.5	
5.0	99.0	88.0	76.0	61.0	78.0	63.0	45.0	69.0	52.5	42.0						5.0	
6.0	86.0	80.0	70.5	55.5	71.0	57.5	40.0	62.5	48.0	39.5						6.0	
7.0	72.0	73.0	66.0	48.0	65.0	52.5	37.0	58.0	43.0	37.0						7.0	
8.0	55.6	56.7	57.9	43.0	58.2	47.0	34.0	52.0	40.0	34.0						8.0	
9.0	44.2	46.2	46.3	40.5	44.8	42.0	31.5	46.0	35.0	32.0						9.0	
10.0	36.2	37.1	38.1	36.3	36.7	38.0	29.0	37.9	32.0	29.2						10.0	
12.0	28.5	27.4	28.0	26.2	27.7	25.5	27.2	27.9	26.0	26.0						12.0	
14.0	19.9	20.7	21.3	19.6	21.0	23.0	20.6	21.2	23.4	20.8						14.0	
16.0				15.0	16.4	18.4	16.0	16.6	18.7	16.2						16.0	
18.0					11.7	13.1	12.7	13.3	15.3	12.9						18.0	
20.0							10.1	10.7	12.7	10.3						20.0	
22.0							8.2	8.6	10.7	8.5						22.0	
24.0																24.0	
26.0																26.0	
28.0																28.0	
30.0																30.0	
32.0																32.0	
34.0																34.0	
36.0																36.0	
38.0																38.0	
40.0																40.0	
42.0																42.0	
44.0																44.0	
46.0																46.0	
48.0																48.0	
50.0																50.0	
52.0																52.0	
Number of lines	12	12	10	9	10	8	5	8	6	5	6	8	5	5	5	Number of lines	
II	0	0	0	0	46	0	0	46	0	0	46	46	0	92	46	II	
III	0	46	0	0	46	46	0	46	92	0	92	46	46	46	46	III	
IV	0	0	0	46	0	0	46	0	46	46	46	46	46	46	46	IV	
V	0	0	0	0	0	0	46	0	46	0	46	46	46	46	46	V	
VI	0	0	0	0	0	0	0	0	46	0	46	46	46	46	46	VI	

STC1300C TRUCK CRANE  
LOAD CHART

- Prerequisites:**  
 ① Boom operating conditions (fully extended boom length), min. length is 13.3m and max.length is 60m  
 ② The span of outriggers is 7.6m x 7.6m  
 ③ 360° rotation is applied  
 ④ Counterweight is 20T counterweight

Range (m)	Main boom																Range (m)
	34.8	39.1	39.1	39.1	43.4	43.4	43.4	47.7	47.7	47.7	52	52	52	56.3	60		
3.0																3.0	
3.5																3.5	
4.0																4.0	
4.5																4.5	
5.0	44.0															5.0	
6.0	42.5	39.9	36.5	34.0												6.0	
7.0	40.3	38.3	35.1	31.5	29.9	26.7	24.8									7.0	
8.0	36.8	36.7	33.6	29.6	29.4	26.2	23.1	28.2	25.6	21.0						8.0	
9.0	33.6	34.1	31.5	27.0	28.8	25.5	22.1	26.2	22.5	20.4						9.0	
10.0	29.8	31.5	28.8	23.9	27.8	24.1	20.4	23.1	20.7	19.4	18.9	16.8				10.0	
12.0	26.5	28.2	25.7	21.8	24.8	22.5	18.9	21.6	19.4	17.8	17.3	15.7	16.3	12.3		12.0	
14.0	23.1	29.8	22.5	19.7	21.8	20.5	17.6	19.7	17.6	16.3	16.0	14.7	14.1	12.3	14.0	14.0	
16.0	18.4	17.5	17.9	18.2	17.5	16.2	16.2	17.8	16.2	15.1	14.7	14.1	13.6	12.0	16.0	16.0	
18.0	15.0	14.1	14.5	15.3	14.1	14.8	15.0	14.4	14.6	13.7	13.7	13.1	12.6	10.9	18.0	18.0	
20.0	12.4	11.6	11.9	12.7	11.5	12.2	13.1	11.8	12.6	13.0	12.2	12.0	12.0	10.5	20.0	20.0	
22.0	10.3	9.4	9.8	10.6	9.4	10.1	11.0	9.7	10.5	11.2	11.0	10.6	9.7	9.7	22.0	22.0	
24.0	8.6	7.8	8.1	8.9	7.7	8.4	9.2	8.0	8.8	9.4	8.4	8.3	8.9	9.0	24.0	24.0	
26.0	7.2	6.4	6.7	7.5	6.4	7.0	7.9	6.6	7.4	8.0	7.0	7.9	7.5	7.6	26.0	26.0	
28.0	6.1	5.2	5.6	6.3	5.2	5.8	6.7	5.5	6.2	6.9	5.9	6.7	6.3	6.4	28.0	28.0	
30.0	5.1	4.2	4.6	5.3	4.2	4.9	5.7	4.5	5.3	5.9	4.9	5.7	5.3	5.4	30.0	30.0	
32.0	4.2	3.4	3.8	4.5	3.4	4.0	4.9	3.7	4.4	5.0	4.0	4.9	4.5	4.6	32.0	32.0	
34.0	3.4	2.7	3.0	3.8	2.7	3.3	4.1	2.9	3.7	4.3	3.3	4.1	3.8	3.8	34.0	34.0	
36.0	2.7	2.0	2.4	3.1	2.0	2.7	3.5	2.3	3.0	3.6	2.7	3.5	3.1	3.2	36.0	36.0	
38.0					1.5	2.1	2.9	1.7	2.5	3.0	2.1	2.9	2.6	2.6	38.0	38.0	
40.0						1.0	1.6		2.0	2.5	1.6	2.4	2.1	2.1	40.0	40.0	
42.0									1.5	2.0	1.2	2.0	1.6	1.7	42.0	42.0	
44.0									1.1	1.5	1.1	1.6	1.2	1.3	44.0	44.0	
46.0															46.0	46.0	
48.0															48.0	48.0	
50.0															50.0	50.0	
52.0															52.0	52.0	
Number of lines	5	4	4	4	3	3	3	3	3	2	2	2	2	2	Number of lines		
II	0	92	46	46	92	46	46	92	46	46	92	46	46	92	100	II	
III	92	46	46	92	46	92	46	92	46	92	46	92	46	92	100	III	
IV	46	46	46	46	46	46	46	46	46	46	46	46	46	46	100	IV	
V	46	46	46	46	46	46	46	46	46	46	46	46	46	46	100	V	
VI	46	46	46	46	46	46	46	46	46	46	46	46	46	46	100	VI	

- Prerequisites:**  
 ① Boom operating conditions (fully extended boom length), min. length is 13.3m and max.length is 60m  
 ② The span of outriggers is 7.5m×7.5m  
 ③ 360° rotation is applied  
 ④ Counterweight is 20T sliding counterweight, counterweight

Range (m)	Main boom																Range (m)
	13.3	17.6	17.6	17.6	21.9	21.9	21.9	26	26	26	30.5	30.5	30.5	34.8	34.8		
3.0	130.0	110.0	91.0	68.0												3.0	
3.5	125.0	103.0	85.0	65.0												3.5	
4.0	116.0	99.0	80.0	60.0												4.0	
4.5	108.0	93.0	75.0	55.0												4.5	
5.0	99.0	86.0	70.0	50.0												5.0	
6.0	89.0	80.0	70.5	55.5	71.0	57.5	40.0	62.5	48.0	39.5	56.0	49.2	40.3	47.2	45.1	6.0	
7.0	72.0	73.0	66.0	48.0	65.0	52.5	37.0	58.0	43.0	37.0	53.0	47.1	36.7	45.0	43.0	7.0	
8.0	58.5	59.6	56.5	43.0	58.2	47.0	34.0	52.0	40.0	34.0	48.8	45.1	33.6	42.4	39.7	8.0	
9.0	46.6	47.6	48.7	40.5	47.2	42.0	31.5	48.0	35.0	32.0	45.7	42.0	30.6	39.2	36.5	9.0	
10.0	38.2	39.2	40.2	36.3	39.8	38.0	29.0	39.9	29.9	29.2	40.2	38.5	28.2	37.4	33.5	10.0	
12.0	26.1	28.0	29.6	27.8	29.3	25.5	23.0	28.8	22.5	26.0	29.0	29.9	26.4	29.4	29.3	12.0	
14.0	21.2	22.0	22.6	20.9	22.8	23.0	21.9	22.5	23.5	23.5	22.1	22.9	23.2	22.5	23.9	14.0	
16.0					16.1	17.5	19.4	17.1	17.7	19.8	17.3	18.1	19.8	17.7	19.0	16.0	
18.0					12.7	14.0	15.9	13.6	14.2	16.3	13.8	14.6	16.1	14.2	15.5	18.0	
20.0								11.0	11.6	13.6	11.2	11.9	13.4	11.5	12.8	20.0	
22.0								8.7	9.4	11.4	7.2	8.0	9.5	7.6	8.9	22.0	
24.0											5.8	6.5	8.0	6.1	7.4	24.0	
26.0											4.6	5.3	6.8	4.9	6.2	26.0	
28.0																28.0	
30.0																30.0	
32.0																32.0	
34.0																34.0	
36.0																36.0	
38.0																38.0	
40.0																40.0	
42.0																42.0	
44.0																44.0	
46.0																46.0	
48.0																48.0	
50.0																50.0	
52.0																52.0	
Number of luffs	12	12	10	9	10	8	5	8	6	5	6	6	5	5	5	Number of luffs	
II	0	0	0	0	46	0	0	46	0	0	46	0	0	92	46	II	
III	0	46	0	0	46	46	0	46	0	0	92	46	46	46	46	III	
IV	0	0	46	0	0	0	46	0	46	0	46	46	46	46	46	IV	
V	0	0	0	46	0	0	0	46	0	0	46	46	46	46	46	V	
VI	0	0	0	0	0	0	0	0	0	0	0	0	0	0	0	VI	

- Prerequisites:**  
 ① Boom operating conditions (fully extended boom length), min. length is 13.3m and max.length is 60m  
 ② The span of outriggers is 7.5m×7.5m  
 ③ 360° rotation is applied  
 ④ Counterweight is 20T sliding counterweight, counterweight

Range (m)	Main boom																Range (m)
	34.8	39.1	39.1	39.1	43.4	43.4	43.4	47.7	47.7	47.7	52	52	52	56.3	60		
3.0																3.0	
3.5																3.5	
4.0																4.0	
4.5																4.5	
5.0	44.0															5.0	
6.0	42.5	39.9	36.5	34.0												6.0	
7.0	40.3	38.3	35.1	31.5	29.9	26.7	24.8									7.0	
8.0	36.8	36.7	33.6	29.6	29.4	26.2	23.1	26.2	23.1	26.2	22.6	21.0				8.0	
9.0	33.6	34.1	31.5	27.0	28.8	25.5	22.1	26.2	22.6	20.4	22.6	20.4				9.0	
10.0	29.8	31.5	28.8	23.9	27.8	24.1	20.4	23.1	20.7	19.4	22.7	20.4				10.0	
12.0	26.5	28.2	25.7	21.8	24.8	22.5	18.9	21.6	19.4	17.8	21.3	18.9	16.8			12.0	
14.0	23.1	23.4	23.1	19.7	21.8	20.5	17.6	19.7	17.6	16.0	19.4	17.3	15.7	16.3	12.3	14.0	
16.0	19.2	18.6	19.0	18.2	18.6	18.6	16.2	17.9	16.2	15.1	14.7	14.1	12.3			16.0	
18.0	16.0	15.0	15.4	16.2	15.0	15.7	15.0	15.3	14.6	15.3	14.6	14.1	12.6	10.9		18.0	
20.0	13.3	12.4	12.8	13.5	12.4	13.0	13.6	12.6	13.4	13.0	13.0	13.0	12.0	10.5		20.0	
22.0	11.1	10.2	10.6	11.4	10.2	10.9	11.8	10.5	11.3	11.3	11.3	11.3	11.4	9.7		22.0	
24.0	9.3	8.5	8.8	9.6	8.4	9.1	10.0	8.7	9.5	10.1	9.1	10.0	9.6	9.0		24.0	
26.0	7.9	7.0	7.4	8.1	7.0	7.6	8.5	7.3	8.0	8.6	7.8	8.5	8.1	8.2		26.0	
28.0	6.6	5.8	6.2	6.9	5.8	6.4	7.3	6.0	6.8	7.4	6.4	7.3	6.9	7.0		28.0	
30.0	5.6	4.8	5.1	5.9	4.8	5.4	6.3	5.0	5.8	6.4	5.4	6.2	5.9	5.9		30.0	
32.0	4.7	3.9	4.3	5.0	3.9	4.5	5.4	4.2	4.9	5.5	4.5	5.4	5.0	5.0		32.0	
34.0		3.1	3.5	4.2	3.1	3.8	4.6	3.4	4.1	4.7	3.8	4.6	4.2	4.3		34.0	
36.0		2.5	2.8	3.6	2.5	3.1	3.9	2.7	3.5	4.0	3.1	3.9	3.6	3.6		36.0	
38.0					1.9	2.5	3.3	2.2	2.9	3.5	2.5	3.3	3.0	3.0		38.0	
40.0						2.0	2.8	1.6	2.4	2.9	2.0	2.8	2.4	2.5		40.0	
42.0							2.0	1.2	1.9	2.5	1.5	2.3	2.0	2.0		42.0	
44.0									1.5	2.0	1.1	1.9	1.5	1.6		44.0	
46.0												1.5	1.2	1.2		46.0	
48.0																48.0	
50.0																50.0	
52.0																52.0	
Number of luffs	5	4	4	4	3	3	3	3	3	2	2	2	2	2	Number of luffs		
II	0	92	46	46	92	46	46	92	46	46	92	46	46	92	100	II	
III	92	46	46	46	92	46	46	92	46	46	92	46	46	92	100	III	
IV	46	46	46	46	46	92	46	46	92	46	92	46	46	92	100	IV	
V	46	46	46	46	46	46	92	46	46	46	92	46	46	92	100	V	
VI	46	46	46	46	46	46	46	46	46	46	46	46	46	46	100	VI	



STC1300C TRUCK CRANE  
LOAD CHART

- Prerequisites:**  
 ① Boom operating conditions/fully extended boom length j,min. length is 13.3m and max.length is 60m  
 ② The span of outriggers is 7.6m×7.6m  
 ③ 360°rotation is applied  
 ④ Counterweight is 27T counterweight

Range (m)	Main boom												Range (m)			
	13.3	17.6	17.6	17.6	21.9	21.9	21.9	21.9	26	26	26	30.5		30.5	34.8	34.8
3.0	130.0	110.0	91.0	68.0												3.0
3.5	125.0	103.0	83.0	66.0												3.5
4.0	116.0	99.0	85.0	65.0	90.0	63.0	49.0	77.0	57.5	46.0						4.0
4.5	108.0	92.0	82.0	63.0	88.0	63.0	47.0	73.0	55.0	44.0						4.5
5.0	99.0	88.0	76.0	61.0	78.0	63.0	45.0	69.0	52.5	42.0						5.0
6.0	86.0	80.0	70.5	55.5	71.0	57.5	40.0	62.5	48.0	39.5						6.0
7.0	72.0	73.0	66.0	48.0	65.0	52.5	37.0	58.0	43.0	37.0						7.0
8.0	62.0	62.0	56.5	43.0	56.5	47.0	34.0	52.0	40.0	34.0						8.0
9.0	54.0	52.0	51.0	40.5	51.8	42.0	31.5	48.0	35.0	32.0						9.0
10.0	42.0	42.0	43.9	36.3	42.5	38.0	29.0	43.7	32.0	29.2						10.0
12.0		31.0	31.9	32.5	30.7	32.2	25.5	31.7	29.5	26.0						12.0
14.0		23.5	24.4	24.9	23.2	24.7	23.0	24.2	24.9	23.5						14.0
16.0					18.1	19.5	21.0	19.1	19.7	21.0						16.0
18.0							17.6	12.5	15.3	15.9						18.0
20.0								10.2	13.1	15.1						20.0
22.0									11.1	12.8						22.0
24.0										10.4						24.0
28.0										8.6	9.3	10.8	9.0	10.2		28.0
30.0										7.1	7.8	9.2	7.5	8.7		30.0
32.0										5.8	6.5	8.0	6.2	7.4		32.0
34.0													4.2	5.4		34.0
36.0																36.0
38.0																38.0
40.0																40.0
42.0																42.0
44.0																44.0
46.0																46.0
48.0																48.0
50.0																50.0
52.0																52.0
54.0																54.0
56.0																56.0
Number of lines	12	12	10	8	10	8	5	8	5	5	5	5	5	5	5	Number of lines
II	0	0	0	0	4/6	0	0	4/6	0	0	4/6	0	0	0	0	II
III	0	4/6	0	0	4/6	4/6	0	4/6	0	0	4/6	4/6	4/6	4/6	4/6	III
IV	0	0	4/6	0	0	0	4/6	0	4/6	4/6	4/6	4/6	4/6	4/6	4/6	IV
V	0	0	0	0	0	4/6	0	0	4/6	0	4/6	4/6	4/6	4/6	4/6	V
VI	0	0	0	0	0	0	0	0	0	0	0	0	0	0	0	VI

STC1300C TRUCK CRANE  
LOAD CHART

- Prerequisites:**  
 ① Boom operating conditions/fully extended boom length j,min. length is 13.3m and max.length is 60m  
 ② The span of outriggers is 7.6m×7.6m  
 ③ 360°rotation is applied  
 ④ Counterweight is 27T counterweight

Range (m)	Main boom												Range (m)			
	34.8	39.1	39.1	39.1	43.4	43.4	43.4	43.4	47.7	47.7	47.7	52		52	56.3	60
3.0																3.0
3.5																3.5
4.0																4.0
4.5																4.5
5.0	44.0															5.0
6.0	42.5	39.9	36.5	34.0												6.0
7.0	40.3	38.3	36.1	31.5	29.9	26.7	24.6									7.0
8.0	36.8	36.7	33.6	29.6	29.4	26.2	23.1	26.2	23.6	21.0						8.0
9.0	33.6	34.1	31.5	27.0	28.6	25.5	22.1	26.2	22.5	20.4						9.0
10.0	29.6	31.5	28.8	23.9	27.8	24.1	20.4	23.1	20.7	19.4						10.0
12.0	26.5	28.2	25.7	21.8	24.8	22.5	18.9	21.6	19.4	17.8	18.9	16.8				12.0
14.0	23.1	25.7	23.1	19.7	21.8	20.5	17.6	19.7	17.8	16.3	16.0	14.7	14.1	12.3		14.0
16.0	19.2	20.5	20.5	18.2	19.5	18.6	16.2	17.9	18.2	15.1	14.7	13.6	12.0			16.0
18.0	17.7	16.8	17.2	16.8	16.8	16.9	15.0	16.2	14.6	13.7	13.1	12.6	10.9			18.0
20.0	14.8	13.9	14.3	15.0	13.9	14.5	13.6	14.1	13.5	13.0	13.0	12.0	10.5			20.0
22.0	12.5	11.6	12.0	12.7	11.6	12.3	12.9	11.9	12.5	12.0	12.0	11.5	9.7			22.0
24.0	10.6	10.6	10.2	10.9	9.8	10.4	11.3	10.0	10.8	10.9	10.4	10.6	10.9			24.0
26.0	9.1	8.5	8.7	9.4	8.5	8.9	9.7	8.5	9.5	9.9	8.9	9.7	9.4	8.2		26.0
28.0	7.8	7.0	7.4	8.1	7.0	7.6	8.5	7.3	8.0	8.6	7.5	8.5	8.1	7.7		28.0
30.0	6.8	5.9	6.3	7.0	5.9	6.6	7.4	6.2	6.9	7.5	6.6	7.4	7.0	7.1		30.0
32.0	5.8	5.0	5.4	6.1	5.0	5.6	6.4	5.3	6.0	6.6	5.6	6.4	6.1	6.1		32.0
34.0		4.2	4.5	5.3	4.2	4.8	5.6	4.4	5.2	5.8	4.8	5.6	5.3	5.3		34.0
36.0		3.4	3.8	4.5	3.4	4.1	4.9	3.7	4.4	5.0	4.1	4.9	4.6	4.6		36.0
38.0					2.8	3.4	4.2	3.1	3.8	4.4	3.4	4.2	3.9	3.9		38.0
40.0					2.2	2.8	3.7	2.8	3.2	3.8	2.9	3.7	3.3	3.4		40.0
42.0								2.0	2.5	3.2	2.4	3.1	2.8	2.9		42.0
44.0								1.5	2.0	2.7	2.4	3.1	2.8	2.9		44.0
46.0									1.5	2.2	1.9	2.7	2.3	2.4		46.0
48.0										1.1	1.9	2.2	1.9	2.0		48.0
50.0											1.5	1.9	1.5	1.6		50.0
52.0												1.2	1.2	1.2		52.0
54.0													1.0	1.0		54.0
56.0														1.0		56.0
Number of lines	5	4	4	4	3	3	3	3	3	3	2	2	2	2	2	Number of lines
II	0	4/6	4/6	4/6	4/6	4/6	4/6	4/6	4/6	4/6	4/6	4/6	4/6	4/6	4/6	II
III	4/6	4/6	4/6	4/6	4/6	4/6	4/6	4/6	4/6	4/6	4/6	4/6	4/6	4/6	4/6	III
IV	4/6	4/6	4/6	4/6	4/6	4/6	4/6	4/6	4/6	4/6	4/6	4/6	4/6	4/6	4/6	IV
V	4/6	4/6	4/6	4/6	4/6	4/6	4/6	4/6	4/6	4/6	4/6	4/6	4/6	4/6	4/6	V
VI	4/6	4/6	4/6	4/6	4/6	4/6	4/6	4/6	4/6	4/6	4/6	4/6	4/6	4/6	4/6	VI

STC1300C TRUCK CRANE  
LOAD CHART

- Prerequisites:**
- ① Boom operating conditions/fully extended boom length j,min. length is 13.3m and max.length is 60m
  - ② The span of outriggers is 7.5m×7.5m
  - ③ 360° rotation is applied
  - ④ Counterweight is 27T sliding counterweight

Range (m)	Main boom												Range (m)			
	13.3	17.8	17.6	17.6	21.9	21.9	21.9	26	26	26	30.5	30.5		30.5	34.8	34.8
3.0	130.0	110.0	91.0	68.0												3.0
3.5	125.0	103.0	85.0	65.0	90.0	68.0										3.5
4.0	116.0	99.0	80.0	60.0	80.0	56.0	49.0	77.0	73.0	55.0	44.0	46.0				4.0
4.5	108.0	93.0	75.0	55.0	70.0	50.0	47.0	69.0	63.0	48.0	39.0	39.0	42.0	45.0		4.5
5.0	99.0	86.0	70.0	50.0	63.0	45.0	45.0	52.5	45.0	42.0	32.5	32.5	35.0	37.0	47.1	5.0
6.0	89.0	80.0	65.0	45.0	55.5	40.0	40.0	48.0	39.5	36.5	26.5	26.5	28.5	30.5	34.8	6.0
7.0	72.0	70.0	55.0	35.0	45.0	30.0	30.0	37.0	28.0	25.0	15.0	15.0	16.0	17.0	19.0	7.0
8.0	62.0	62.0	45.0	25.0	35.0	20.0	20.0	27.0	18.0	15.0	5.0	5.0	6.0	6.0	7.0	8.0
9.0	54.0	53.0	35.0	15.0	25.0	10.0	10.0	17.0	8.0	7.0	0.0	0.0	1.0	1.0	1.0	9.0
10.0	47.0	45.0	25.0	10.0	15.0	5.0	5.0	10.0	5.0	4.0	0.0	0.0	0.0	0.0	0.0	10.0
12.0	33.1	34.1	24.2	10.0	10.0	0.0	0.0	5.0	2.0	2.0	0.0	0.0	0.0	0.0	0.0	12.0
14.0	25.2	26.1	18.7	5.0	5.0	0.0	0.0	2.0	1.0	1.0	0.0	0.0	0.0	0.0	0.0	14.0
16.0					15.6	11.0	11.0	1.0	0.0	0.0	0.0	0.0	0.0	0.0	0.0	16.0
18.0					16.6	11.2	11.2	0.0	0.0	0.0	0.0	0.0	0.0	0.0	0.0	18.0
20.0					13.6	10.2	10.2	0.0	0.0	0.0	0.0	0.0	0.0	0.0	0.0	20.0
22.0					11.4	8.6	8.6	0.0	0.0	0.0	0.0	0.0	0.0	0.0	0.0	22.0
24.0					9.5	7.3	7.3	0.0	0.0	0.0	0.0	0.0	0.0	0.0	0.0	24.0
26.0					7.9	6.6	6.6	0.0	0.0	0.0	0.0	0.0	0.0	0.0	0.0	26.0
28.0					6.6	5.8	5.8	0.0	0.0	0.0	0.0	0.0	0.0	0.0	0.0	28.0
30.0					5.8	4.8	4.8	0.0	0.0	0.0	0.0	0.0	0.0	0.0	0.0	30.0
32.0					4.8	3.8	3.8	0.0	0.0	0.0	0.0	0.0	0.0	0.0	0.0	32.0
34.0					3.8	2.8	2.8	0.0	0.0	0.0	0.0	0.0	0.0	0.0	0.0	34.0
36.0					2.8	1.8	1.8	0.0	0.0	0.0	0.0	0.0	0.0	0.0	0.0	36.0
38.0					1.8	0.8	0.8	0.0	0.0	0.0	0.0	0.0	0.0	0.0	0.0	38.0
40.0					0.8	0.0	0.0	0.0	0.0	0.0	0.0	0.0	0.0	0.0	0.0	40.0
42.0					0.0	0.0	0.0	0.0	0.0	0.0	0.0	0.0	0.0	0.0	0.0	42.0
44.0					0.0	0.0	0.0	0.0	0.0	0.0	0.0	0.0	0.0	0.0	0.0	44.0
46.0					0.0	0.0	0.0	0.0	0.0	0.0	0.0	0.0	0.0	0.0	0.0	46.0
48.0					0.0	0.0	0.0	0.0	0.0	0.0	0.0	0.0	0.0	0.0	0.0	48.0
50.0					0.0	0.0	0.0	0.0	0.0	0.0	0.0	0.0	0.0	0.0	0.0	50.0
52.0					0.0	0.0	0.0	0.0	0.0	0.0	0.0	0.0	0.0	0.0	0.0	52.0
54.0					0.0	0.0	0.0	0.0	0.0	0.0	0.0	0.0	0.0	0.0	0.0	54.0
56.0					0.0	0.0	0.0	0.0	0.0	0.0	0.0	0.0	0.0	0.0	0.0	56.0
Number of lines	12	12	10	8	10	8	5	5	5	5	5	5	5	5	5	Number of lines
II	0	0	0	0	46	0	0	46	0	0	46	0	0	46	0	II
III	0	46	0	0	46	92	0	92	0	92	46	46	46	46	0	III
IV	0	0	46	0	0	46	0	46	46	46	46	46	46	46	46	IV
V	0	0	0	46	0	0	46	0	0	0	0	0	0	0	0	V
VI	0	0	0	0	0	0	0	0	0	0	0	0	0	0	0	VI

STC1300C TRUCK CRANE  
LOAD CHART

- Prerequisites:**
- ① Boom operating conditions/fully extended boom length j,min. length is 13.3m and max.length is 60m
  - ② The span of outriggers is 7.5m×7.5m
  - ③ 360° rotation is applied
  - ④ Counterweight is 27T sliding counterweight

Range (m)	Main boom												Range (m)		
	34.8	39.1	39.1	39.1	43.4	43.4	43.4	47.7	47.7	47.7	52	52		56.3	60
3.0															3.0
3.5															3.5
4.0															4.0
4.5															4.5
5.0	44.0	39.9	36.5	34.0	29.9	26.7	24.6	26.2	23.6	21.0					5.0
6.0	42.5	38.3	35.1	31.5	28.4	25.2	22.1	23.1	20.7	19.4					6.0
7.0	40.3	36.7	33.6	29.6	26.8	23.5	20.4	20.4	17.8	17.3					7.0
8.0	36.8	34.1	31.5	27.0	24.8	22.1	19.4	19.4	16.8	16.0					8.0
9.0	33.6	31.5	29.8	23.9	21.8	19.4	17.8	17.8	15.3	14.7					9.0
10.0	29.8	28.2	25.7	21.8	19.7	17.9	16.2	16.2	13.7	13.1					10.0
12.0	26.5	25.2	22.0	19.7	18.2	16.9	15.0	15.0	12.6	12.0					12.0
14.0	23.1	22.0	20.5	18.2	17.6	16.2	14.6	14.6	12.0	11.5					14.0
16.0	19.2	18.0	16.4	14.8	14.2	13.2	12.9	12.9	10.9	10.6					16.0
18.0	17.8	16.0	14.4	12.8	12.6	11.3	10.9	10.9	9.4	9.1					18.0
20.0	15.9	14.4	12.8	11.8	11.8	10.7	10.7	10.7	9.4	9.1					20.0
22.0	13.5	12.6	11.1	10.2	10.2	9.2	9.2	9.2	8.2	8.2					22.0
24.0	11.5	10.7	9.5	8.9	8.9	8.4	8.4	8.4	7.6	7.6					24.0
26.0	9.9	9.1	8.1	7.7	7.7	7.3	7.3	7.3	6.6	6.6					26.0
28.0	8.6	7.8	7.0	6.7	6.7	6.3	6.3	6.3	5.9	5.9					28.0
30.0	7.5	6.6	6.0	5.7	5.7	5.3	5.3	5.3	5.1	5.1					30.0
32.0	6.5	5.7	5.2	4.9	4.9	4.6	4.6	4.6	4.3	4.3					32.0
34.0		4.8	4.4	4.1	4.1	3.8	3.8	3.8	3.6	3.6					34.0
36.0		4.0	3.6	3.4	3.4	3.1	3.1	3.1	2.9	2.9					36.0
38.0			3.0	2.7	2.7	2.4	2.4	2.4	2.2	2.2					38.0
40.0			2.6	2.3	2.3	2.0	2.0	2.0	1.8	1.8					40.0
42.0			2.2	1.9	1.9	1.6	1.6	1.6	1.4	1.4					42.0
44.0			1.8	1.6	1.6	1.3	1.3	1.3	1.1	1.1					44.0
46.0			1.4	1.2	1.2	0.9	0.9	0.9	0.8	0.8					46.0
48.0			1.0	0.9	0.9	0.7	0.7	0.7	0.6	0.6					48.0
50.0			0.8	0.7	0.7	0.5	0.5	0.5	0.4	0.4					50.0
52.0			0.6	0.5	0.5	0.4	0.4	0.4	0.3	0.3					52.0
54.0			0.4	0.3	0.3	0.2	0.2	0.2	0.2	0.2					54.0
56.0			0.2	0.2	0.2	0.1	0.1	0.1	0.1	0.1					56.0
Number of lines	5	4	4	4	3	3	3	3	2	2	2	2	2	2	Number of lines
II	0	92	46	46	92	46	46	46	92	46	46	46	92	100	II
III	92	46	92	46	92	46	46	46	92	46	46	46	92	100	III
IV	46	46	46	46	46	46	46	46	46	46	46	46	46	100	IV
V	46	46	46	46	46	46	46	46	46	46	46	46	46	100	V
VI	46	46	46	46	46	46	46	46	46	46	46	46	46	100	VI

STC1300C TRUCK CRANE  
LOAD CHART

- Prerequisites:**  
 ① Boom operating conditions fully extended boom length j, min. length is 13.3m and max length is 60m  
 ② The span of outriggers is 7.6m x 7.6m  
 ③ 360° rotation is applied  
 ④ Counterweight is 40T counterweight

Range (m)	Main boom																Range (m)
	13.3	17.6	17.6	17.6	21.9	21.9	21.9	26	26	26	30.5	30.5	30.5	34.8	34.8		
3.0	130.0	110.0	91.0	68.0												3.0	
3.5	126.0	103.0	83.0	66.0												3.5	
4.0	116.0	99.0	85.0	65.0												4.0	
4.5	108.0	93.0	82.0	63.0	90.0	88.0	85.0	77.0	73.0	55.0	44.0	46.0	46.0	46.0	46.0	4.5	
5.0	99.0	89.0	76.0	61.0	89.0	89.0	86.0	78.0	73.0	52.0	42.0	46.0	46.0	46.0	46.0	5.0	
6.0	86.0	80.0	70.5	55.5	71.0	71.0	68.0	62.5	58.0	39.5	30.5	30.5	30.5	30.5	30.5	6.0	
7.0	72.0	70.0	63.0	49.0	65.0	65.0	62.0	58.0	54.0	37.0	28.0	28.0	28.0	28.0	28.0	7.0	
8.0	62.0	62.0	56.5	43.0	59.5	59.5	57.0	54.0	52.0	34.0	26.0	26.0	26.0	26.0	26.0	8.0	
9.0	54.0	53.0	51.0	40.5	52.5	52.5	47.0	45.0	43.0	32.0	24.0	24.0	24.0	24.0	24.0	9.0	
10.0	47.0	47.0	46.0	36.3	47.0	47.0	43.0	41.0	39.5	29.2	22.0	22.0	22.0	22.0	22.0	10.0	
12.0		40.0	40.2	34.2	39.0	39.0	36.0	34.0	32.5	25.5	19.5	19.5	19.5	19.5	19.5	12.0	
14.0			30.5	29.0	30.0	30.0	28.0	26.0	24.5	20.2	15.5	15.5	15.5	15.5	15.5	14.0	
16.0																16.0	
18.0																18.0	
20.0																20.0	
22.0																22.0	
24.0																24.0	
26.0																26.0	
28.0																28.0	
30.0																30.0	
32.0																32.0	
34.0																34.0	
36.0																36.0	
38.0																38.0	
40.0																40.0	
42.0																42.0	
44.0																44.0	
46.0																46.0	
48.0																48.0	
50.0																50.0	
52.0																52.0	
54.0	1.0															54.0	
56.0																56.0	
Number of lines	12	12	10	8.0	10	8	5	5	8	6	5	5	5	5	5	Number of lines	
II	0	0	0	0	46	0	0	46	0	0	46	46	46	46	46	II	
III	0	46	0	0	46	46	0	46	92	0	46	46	46	46	46	III	
IV	0	0	46	0	0	0	46	0	46	46	46	46	46	46	46	IV	
V	0	0	0	0	0	46	0	0	46	46	46	46	46	46	46	V	
VI	0	0	0	0	0	0	46	0	0	0	0	0	0	0	0	VI	

STC1300C TRUCK CRANE  
LOAD CHART

- Prerequisites:**  
 ① Boom operating conditions fully extended boom length j, min. length is 13.3m and max length is 60m  
 ② The span of outriggers is 7.6m x 7.6m  
 ③ 360° rotation is applied  
 ④ Counterweight is 40T counterweight

Range (m)	Main boom																Range (m)
	34.8	39.1	39.1	39.1	43.4	43.4	43.4	47.7	47.7	47.7	52	52	52	56.3	60		
3.0																3.0	
3.5																3.5	
4.0																4.0	
4.5																4.5	
5.0	44.0	39.9	36.5	34.0	29.9	26.7	24.6	26.2	23.6	21.0						5.0	
6.0	42.5	38.3	35.1	31.5	28.4	26.2	23.1	25.2	22.5	20.4						6.0	
7.0	40.3	36.7	33.6	29.6	28.4	26.2	23.1	25.2	22.5	20.4						7.0	
8.0	36.8	34.1	31.5	27.0	28.8	25.5	22.1	25.2	22.5	20.4						8.0	
9.0	33.6	31.5	28.8	23.9	27.8	24.1	20.4	23.1	20.7	19.4	18.9	16.8				9.0	
10.0	29.8	28.2	25.7	21.8	24.8	22.5	18.9	21.6	19.4	17.9	17.3	15.7	16.3	12.3		10.0	
12.0	26.5	26.2	25.7	21.8	21.8	20.5	17.6	19.7	17.9	16.2	15.1	14.7	14.1	12.3		12.0	
14.0	23.1	23.0	20.5	18.2	19.5	18.6	16.2	17.9	16.2	15.1	14.7	14.1	13.6	12.0		14.0	
16.0	19.2	20.5	18.5	16.9	17.8	16.9	15.0	16.2	14.6	13.7	13.1	12.6	12.0	10.9	18.0	16.0	
18.0	17.8	17.5	16.5	15.2	17.0	15.3	13.8	14.5	13.5	13.0	13.0	12.0	12.0	10.5	20.0	18.0	
20.0	16.0	15.2	14.5	13.0	16.0	15.0	12.9	12.8	12.5	12.0	12.0	11.5	11.5	9.7	22.0	20.0	
22.0	14.8	13.4	13.0	13.0	16.0	15.0	13.0	12.1	11.8	11.4	10.9	11.6	11.0	9.0	24.0	22.0	
24.0	12.1	11.2	11.5	12.0	11.2	11.8	11.3	11.1	10.4	10.5	11.0	10.5	10.5	8.2	26.0	24.0	
26.0	10.5	9.7	10.0	10.8	9.7	10.3	10.3	10.0	10.0	9.3	10.0	9.3	10.0	7.7	28.0	26.0	
28.0	9.3	8.4	8.8	9.5	8.4	9.0	8.8	8.6	8.6	8.0	8.7	8.7	9.2	7.2	30.0	28.0	
30.0	8.0	7.3	7.7	8.2	7.4	7.8	7.8	7.5	7.3	7.5	7.0	7.6	7.4	6.5	32.0	30.0	
32.0		5.3	5.6	6.4	4.8	5.2	6.0	6.9	6.4	6.2	6.1	6.9	6.5	5.9	34.0	32.0	
34.0					4.8	4.8	5.7	6.4	5.7	5.7	5.3	6.1	5.7	5.6	36.0	34.0	
36.0															38.0	36.0	
38.0															40.0	38.0	
40.0															42.0	40.0	
42.0															44.0	42.0	
44.0															46.0	44.0	
46.0															48.0	46.0	
48.0															50.0	48.0	
50.0															52.0	50.0	
52.0															54.0	52.0	
54.0															56.0	54.0	
56.0															58.0	56.0	
Number of lines	5	4	4	4	3	3	3	3	3	2	2	2	2	2	Number of lines		
II	0	92	46	46	92	46	46	92	46	46	92	46	46	92	II		
III	92	46	92	46	92	46	46	92	46	92	46	92	46	92	III		
IV	46	46	46	46	46	46	46	46	46	46	46	46	46	46	IV		
V	46	46	46	46	46	46	46	46	46	46	46	46	46	46	V		
VI	46	46	46	46	46	46	46	46	46	46	46	46	46	46	VI		

STC1300C TRUCK CRANE  
LOAD CHART

- Prerequisites:**
- ① Boom operating conditions fully extended boom length, min. length is 13.3m and max length is 60m
  - ② The span of outriggers is 7.6m x 7.6m
  - ③ 360° rotation is applied
  - ④ Counterweight is 40T sliding counterweight

Range (m)	Main boom												Range (m)			
	13.3	17.6	17.6	17.6	21.9	21.9	21.9	26	26	26	30.5	30.5		30.5	34.8	34.8
3.0	130.0	110.0	91.0	68.0												3.0
3.5	125.0	103.0	85.0	65.0												3.5
4.0	116.0	99.0	80.0	60.0												4.0
4.5	106.0	90.0	72.0	53.0												4.5
5.0	99.0	83.0	67.0	48.0												5.0
6.0	88.0	70.5	55.5	40.0												6.0
7.0	72.0	59.0	46.0	32.0												7.0
8.0	62.0	50.0	38.0	25.0												8.0
9.0	54.0	43.0	32.0	20.0												9.0
10.0	47.0	37.0	27.0	16.0												10.0
12.0		31.2	22.0	13.0												12.0
14.0			18.0	10.0												14.0
16.0				14.5												16.0
18.0					19.7											18.0
20.0						21.4										20.0
22.0							21.9									22.0
24.0								21.9								24.0
26.0									21.9							26.0
28.0										21.9						28.0
30.0											21.9					30.0
32.0												21.9				32.0
34.0													21.9			34.0
36.0														21.9		36.0
38.0															21.9	38.0
40.0																40.0
42.0																42.0
44.0																44.0
46.0																46.0
48.0																48.0
50.0																50.0
52.0																52.0
54.0																54.0
56.0																56.0
Number of lines	12	12	10	8.0	10	8	5	5	5	5	5	5	5	5	5	Number of lines
II	0	0	0	0	46	0	0	46	0	0	46	0	0	46	0	II
III	0	46	0	0	46	46	0	46	92	0	46	46	0	46	46	III
IV	0	0	46	0	0	0	46	0	46	46	46	46	46	46	46	IV
V	0	0	0	46	0	0	46	0	46	0	46	46	46	46	46	V
VI	0	0	0	0	0	0	0	46	0	0	0	0	0	0	0	VI

STC1300C TRUCK CRANE  
LOAD CHART

- Prerequisites:**
- ① Boom operating conditions fully extended boom length, min. length is 13.3m and max length is 60m
  - ② The span of outriggers is 7.6m x 7.6m
  - ③ 360° rotation is applied
  - ④ Counterweight is 40T counterweight

Range (m)	Main boom												Range (m)			
	34.8	39.1	39.1	39.1	43.4	43.4	43.4	47.7	47.7	47.7	52	52		56.3	60	
3.0															3.0	
3.5															3.5	
4.0															4.0	
4.5															4.5	
5.0	44.0														5.0	
6.0	42.5	39.9	36.5	34.0											6.0	
7.0	40.3	38.3	35.1	31.5	29.9	26.7	24.6								7.0	
8.0	36.8	36.7	33.6	29.6	29.4	26.2	23.1	26.2	23.6	21.0					8.0	
9.0	33.6	34.1	31.5	27.0	28.8	25.5	22.1	26.2	22.5	20.4					9.0	
10.0	29.8	31.5	28.8	23.9	27.8	24.1	20.4	23.1	20.7	19.4					10.0	
12.0	26.5	28.2	25.7	21.8	24.8	22.5	18.9	21.6	19.4	17.8	18.9	16.8			12.0	
14.0	23.1	26.0	23.1	19.7	21.8	20.5	17.6	19.7	17.8	16.3	16.0	14.7	16.3	12.3	14.0	
16.0	19.2	23.0	20.5	18.2	19.5	18.6	16.2	17.9	16.2	15.1	14.7	14.1	13.6	12.0	16.0	
18.0	17.8	20.5	18.6	16.8	17.8	16.9	15.0	16.2	14.6	13.7	13.1	12.6	10.9	18.0	18.0	
20.0	16.0	17.5	16.6	15.2	17.3	15.3	13.6	14.5	13.5	13.0	13.0	12.0	10.5	20.0	20.0	
22.0	14.8	15.8	16.0	14.0	16.4	13.8	12.9	13.8	12.5	12.0	11.3	11.5	9.7	22.0	24.0	
24.0	13.4	13.6	14.0	13.0	15.5	13.3	12.1	13.0	11.4	10.9	11.6	10.6	11.0	24.0	24.0	
26.0	12.5	11.7	12.1	12.7	11.7	12.4	11.3	11.8	10.4	10.5	11.0	10.6	10.5	26.0	28.0	
28.0	11.0	10.3	10.6	11.2	10.2	10.8	10.3	10.5	10.0	9.3	10.7	9.3	10.2	28.0	30.0	
30.0	9.7	8.9	9.3	10.0	8.9	9.6	9.8	9.2	9.7	8.8	9.6	8.7	9.5	30.0	32.0	
32.0		7.8	8.1	8.8	7.8	8.4	8.2	8.0	8.8	8.0	8.4	8.3	8.8	32.0	34.0	
34.0			7.1	7.8	6.8	7.4	8.2	7.0	7.8	7.7	7.4	8.0	7.8	34.0	36.0	
36.0				7.0	5.9	6.6	7.4	6.2	6.9	7.3	6.5	7.4	7.0	36.0	38.0	
38.0					5.2	5.8	6.6	5.4	5.4	6.1	5.8	6.6	6.2	38.0	40.0	
40.0						4.5	5.1		4.7	5.4	5.1	5.9	5.5	40.0	42.0	
42.0								4.1	4.8	5.4	5.0	5.4	5.0	42.0	44.0	
44.0									4.2	4.9	4.0	4.7	4.4	4.0	46.0	46.0
46.0											3.5	4.2	3.9	4.0	48.0	48.0
48.0												3.8	3.4	3.5	50.0	50.0
50.0													3.0	3.1	52.0	52.0
52.0														2.6	54.0	54.0
54.0															56.0	56.0
56.0															2.0	56.0
Number of lines	5	4	4	4	3	3	3	3	3	2	2	2	2	2	2	Number of lines
II	0	92	46	46	92	46	46	92	46	46	92	46	46	92	100	II
III	92	46	92	46	92	46	92	46	92	46	92	46	92	100	100	III
IV	46	46	46	46	46	46	46	46	46	46	46	46	46	46	100	IV
V	46	46	46	46	46	46	46	46	46	46	46	46	46	46	100	V
VI	46	46	46	46	46	46	46	46	46	46	46	46	46	46	100	VI

- Prerequisites:  
 ① Boom operating conditions fully extended boom length+jib length  $l_1$ , max.length is 60m+10.7m  
 ② The span of outriggers is 7.5m×7.5m  
 ③ 360° rotation is applied  
 ④ Counterweight is 40t

Main boom elevation	Main boom+Jib			
	0°	15°	30°	Radius (m)
78°	7000	5200	3700	16.8
75°	6800	4500	3600	20.3
72°	6300	4200	3400	23.7
70°	5400	4000	3500	25.9
65°	4500	3600	3100	31.4
60°	4000	3300	2900	38.5
55°	3400	2400	2300	41.4
50°	2400	2200	2100	46
45°	1700	1600	1500	50.2
40°	1100	1000	900	53.9

- Prerequisites:  
 ① Boom operating conditions fully extended boom length+jib length  $l_1$ , max.length is 60m+18m  
 ② The span of outriggers is 7.5m×7.5m  
 ③ 360° rotation is applied  
 ④ Counterweight is 40t

Main boom elevation	Main boom+Jib			
	0°	15°	30°	Radius (m)
78°	3800	2800	2200	21.7
75°	3400	2600	2100	25.4
72°	3200	2500	2000	28.1
70°	3000	2400	1900	31.5
65°	2700	2200	1700	37.3
60°	2400	1900	1500	42.9
55°	1900	1600	1400	48
50°	1700	1500	1300	52.8
45°	1100	1000	900	57.2
40°	—	—	—	—

